



SPURMIPI
Design by Dima Loginoff

Collection consisting of aluminium ceiling lamps and suspended lamps.
Available in several colours and sizes

Typology: RECESSED SUSPENSION LAMP

Ratings

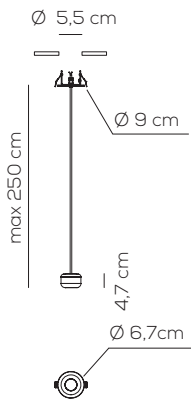
- Built in **LED** module
- Supply 700mA 9,2Vac
- CCT 2700K, 3000K* or 3500K
- IP20
- Surface installation over holes
- Dimmable with dedicated PSU
- Aluminum body painted
- Diffuser opalescent

SP URBMI PI (RECESSED)

Product code composition

kg 0,5 m³ 0,004

URBAN / DRIVER NOT INCLUDED



Type	Article	CCT	Recessed	Colours	LED Source
SP	URBMI P	1 2700K	I	BC wrinkled white	LCC 6.5 W - diffused beam
		2 3000K*		BR matt bronze	
		3 3500K		NI matt nickel	

9,2Vdc 700mA **LED** ~671lm* 103lm/W*
 example composition code **SP URBMI P I NI LCC**

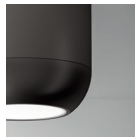
Available colors



BC
Wrinkled
white



BR
Matt
bronze



NI
Matt
nickel

CUSTOMER _____ NOTES _____

SPURBMI P_ I __ LCC

NOTICE:
Luminous flux (lm) and efficacy (lm/W) for all LED luminaires is based on nominal ratings of the LED sources.
Technical data could be subject to alteration without notice. Axo Light does not provide legal guarantee for the accuracy of this data sheet.